

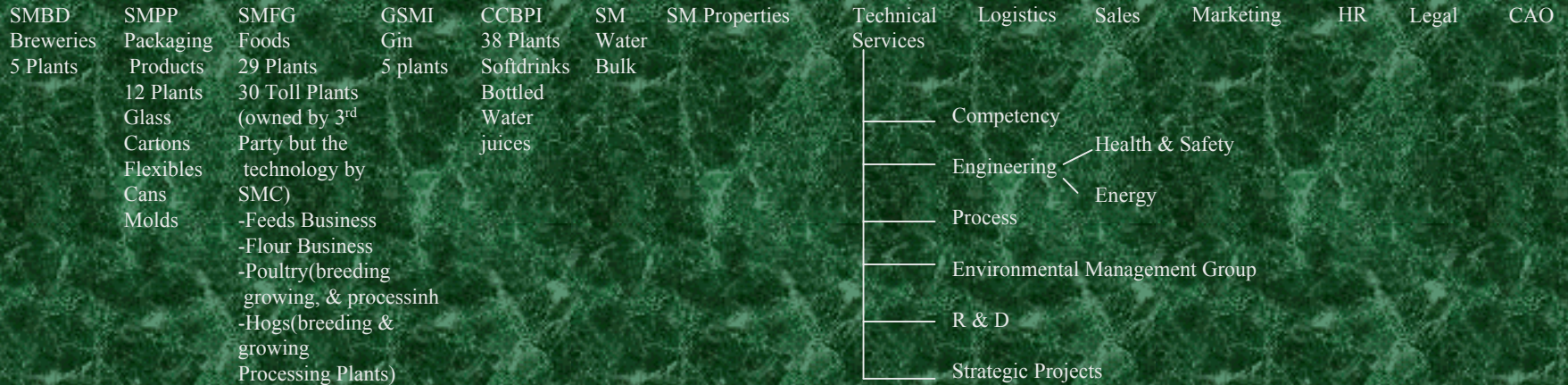
Organizational Chart of San Miguel Corporation

Chairman

Corporate President

Subsidiaries
Division Presidents

Corporate Services Unit
Corporate Managers



Environmental Management Group

Job descriptions

- EMS - To manage the implementation and maintenance of an EMS throughout the Corporation(all plants) following international standards to help each plant systematically manage their environmental concerns both in the short and long term that will eventually result in higher productivity, less waste generation, least cost compliance and crisis avoidance.

1. Wastewater Management :
2. Air Quality Management
3. Solid Waste Management

B. Planning - To ensure that proposed projects meet all requirements of zoning, siting, water supply, waste disposal and Environmental Regulations. To ensure that proposed treatment facilities are well designed to achieved high operating efficiencies, low unit treatment costs and high reliability.

C. Process Design - To ensure that wastewater treatment facilities are appropriate, well designed, functional and cost effective.

CDM Project Proposed by PHILBIO-MITSUBISHI SECURITIES with funding from the National Energy Development Office (NEDO)

- UASB Project at San Miguel Brewery , San Fernando, Pampanga
- Output of the Project:
 - UASB feasibility study for San Fernando Complex (Brewery, Feed Mill, Poultry Processing)
 - Project Design Document or PDD to qualify as CDM Project
- Duration : Four months from the time the project is approved
- Follow-On Work : A Validation Report by a qualified 3rd party may be undertaken with the funding by Philbio and Mitsubishi Securities to validate the findings in the PDD.
- Status of the Project – On hold
- Barriers
 - No established National CDM Authority in the Philippines
 - Kyoto Protocol is not yet ratified
 - Absence Implementing Rules & Regulations regarding CDM
 - No guidelines on the identification and formulation of potential CDM projects

Thank You